



## Welcome to Kommuneqarfik Sermersooq

In this folder you will find practical information addressed to English-speaking citizens in Kommuneqarfik Sermersooq.



# Welcome to Kommuneqarfik Sermersooq

“In Kommuneqarfik Sermersooq there is room for everyone; and everyone is needed.”



Mayor, Asii Chemnitz Narup (IA)

Kommuneqarfik Sermersooq was established in January 2009, and its 609.247 km2 makes it the second-largest municipality of the world. The capital Nuuk is placed in Kommuneqarfik Sermersooq, and is geographically placed in line with Reykjavik, Iceland, and approximately 100 km north compared to Oslo, Norway. The climate is arctic, with average temperatures ranging from -8°C (17°F) in January to +7°C (45°F) in July.

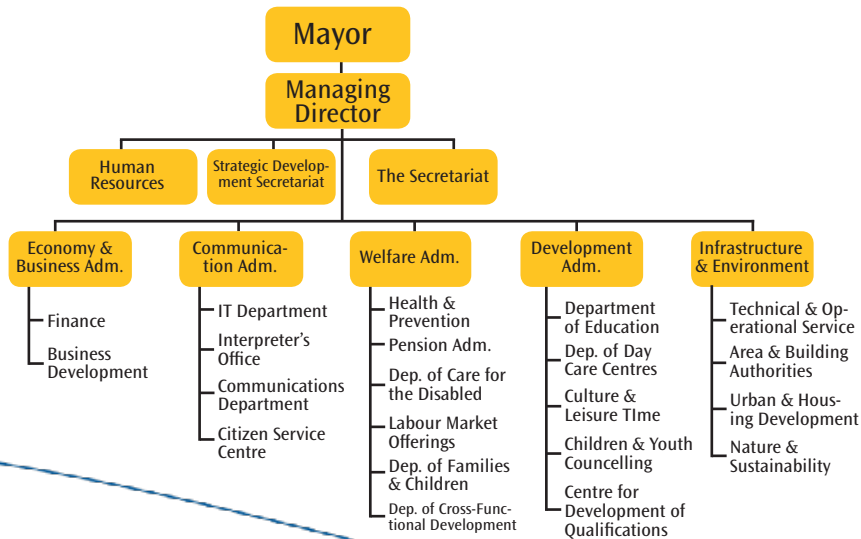
Kommuneqarfik Sermersooq includes 5 towns and 8 settlements.

The total population for Kommuneqarfik Sermersooq is app. 21.000 persons, with 19.300 in towns and 1.700 in the settlements. The total population for Greenland is app. 56.200 (1/1-2009).

The city council of Kommuneqarfik Sermersooq counts 21 members. In addition four councils for the settlements - with three to five members each - are elected. The mayor is Asii Chemnitz Narup (Inuit Atagatigit).

The municipal administration daily manages the decisions which are made at the monthly municipal meetings. The political decisions are put into action by the administration.

The municipal administration is organized into the illustrated departments below, each responsible for specific areas of service:



One of the main focusses of Kommuneqarfik Sermersooq is to strengthen the commercial and industrial development.

Undertakings regarding innovation are prioritised and tourism is growing rapidly. In addition there are excellent educational opportunities.

The University of Greenland is placed in Nuuk, and offers top-quality degree programmes within various fields of science. Moreover e.g. a business school, a journalist school, and a maritime college are to be found in Kommuneqarfik Sermersooq.

For detailed information about the various areas of service in the municipal administration please contact the concerned department. Contact information is available at our website: [www.sermersooq.gl](http://www.sermersooq.gl).

## Permission to Work and Stay

The right to stay and work in Kommuneqarfik Sermersooq depends, among other things, on your citizenship.

In 2009 self-government was introduced in Greenland. However rulings on permits to work and stay in Greenland are made by the relevant authorities in Denmark in accordance with the Greenlandic Foreigners Act. Notice that compared to Denmark, Greenland is a separate area when it comes to travel and staying. This means that a permit to stay in Denmark doesn't give you a permit to stay in Greenland.

Foreigners who are not Nordic citizens must have residence and work permits for Greenland.

Applications for residence permits in Greenland can be made to a Danish representative in another country. In Greenland the application can be made to the police, who will send it on to the Danish Immigration Service.

The Danish Immigration Service can give you the exact information on the current rulings. Their contact information is available at:

[www.newtodenmark.dk](http://www.newtodenmark.dk).

## Citizen Service Centre

Kommuneqarfik Sermersooq Citizen Services guides you through the service system and offers you information on a wide range of services.



Citizen Services offer walk-in service at our centers in the towns and settlements of Kommuneqarfik Sermersooq. Among other themes Citizen Services serve the citizens with new housing certificates, hunting and fishing licenses, how to register at the day care centre, how to change your address, how to apply for rent subsidy, and many other

citizen related tasks. If Citizen Services cannot help, they will forward you to the next person who can.

Further information concerning opening hours, contact information etc. is available at [www.sermersooq.gl](http://www.sermersooq.gl).

### Communication

Despite the vastness of the country and the nature of the landscape, communications in Kommuneqarfik Sermersooq are well-developed. The mobile phone system covers all the inhabited areas with the exception of one or two settlements. In addition Greenland joined the global internet highway in 2009; Tele Greenland launched brand new sea cables to boost internet speed in Greenland.

The mail services in Kommuneqarfik Sermersooq are represented in all the towns and settlements. Further information concerning placement of post offices, opening hours etc. is available at [www.telepost.gl](http://www.telepost.gl).

KNR (Kalaallit Nunaata Radioa, Greenland Broadcasting Corporation) has overall responsibility for radio and television services and produces radio as well as a relatively large number of television programmes.



Additionally KNR offers online news service at [www.knr.gl](http://www.knr.gl).

### Culture and Leisure Time

Kommuneqarfik Sermersooq has a wealth of activities to offer, and the amazing nature enables outdoor activities varying from skiing to kayaking.

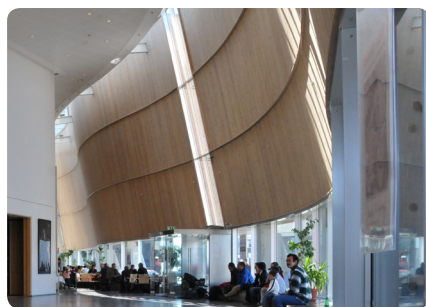
Living in Kommuneqarfik Sermersooq you can make use of swim baths, fitness centres, libraries, school of music, leisure-time education, and many other leisure-time activities.

In addition the associational life is well-developed, thus lots of local youth and sport unions are to be found.

Greenland's National Museum and Archive is placed in Nuuk, and serves as the central museum for Greenland. The fascinating and unique arctic culture is visible elsewhere than the National Museum, and can be discovered in the cities and settlements of Kommuneqarfik Sermersooq. For instance the Greenlandic national costumes are still used on special festive occasions.

#### Katuaq

The building of the Culture Centre in Nuuk, Katuaq, offers great opportunities for cultural experiences.



Katuaq is providing the public with all sorts of entertainment, including large and small concerts,

theatre for young and old alike, exhibitions of the works of famous and emerging artists, films for children, young people and adults, lectures, talks and much more.

Find the programme of Katuaq at [www.katuaq.gl](http://www.katuaq.gl).

#### The church

The church of Greenland is part of the Evangelical Lutheran Church of Denmark. All enquiries and calls regarding religious ceremonies, certificates etc. should be directed to the deanery or the priests.

Further information regarding the church in Greenland is available at [www.groenlandsstift.dk](http://www.groenlandsstift.dk).

#### Wildlife and nature

Kommuneqarfik Sermersooq offers great opportunities for trophy hunting, sports fishing, kayaking, and a wealth of other wildlife activities.



The skiing lift is open all winter. Here you can rent equipment, hire a skiing instructor or just exercise for hours. Good opportunities for cross-country skiing exist as well.

A growing interest in extreme sports is evolving, including kite skiing, paragliding, heli-skiing, and more.

Additionally diving, hiking and sailing are common activities in the spectacular nature of Kommuneqarfik Sermersooq.

Notice that citizens with permanent address in Kommuneqarfik Sermersooq are required to buy personal hunting licenses if they wish to go hunting. Ask for your hunting license at your Citizen Service Centre. Here they can also give you the exact information on regulations concerning fishing and hunting periods and quotas.

#### Leisure-time education

Leisure-time education is offered all citizens in Kommuneqarfik Sermersooq.

The offers are divided according to age groups; leisure-time education addressed children up to the age of 19; and evening classes addressed adults over the age of 19.

The leisure-time education is offered while the school is open between 8.00 and 16.00. That gives the children time to catch leisure-time education after school.

The evening classes are offered from October until March. Courses are offered on demand and qualifications of the teachers. Thus there have been offered classes in a variety of subjects, including lessons in language, poetry, art, computer science, first aid, and many other themes. Primarily the classes are offered in Danish and Greenlandic.

For further information concerning leisure-time education or evening classes please contact the Educational Assistant in Kommuneqarfik Sermersooq.

### School of music

In Nuuk also a school of music is to be found. Music lessons are offered free to all children in Kommuneqarfik Sermersooq. However the waiting lists can be long, thus you may be patient. Adults are offered lessons in connection with the above-mentioned evening classes.

Beside lessons in all sorts of instruments and vocal training, the school of music annually arranges workshops in Gospel, and various other themes.

### Language center in Nuuk

To improve the population's language skills a language center in Nuuk has been established. Primarily the center gives language courses and language teaching. Additionally language course stays and language teaching at other institutions are offered.

Further information concerning course plans, prices and contact information can be found at [www.oqaatsit.gl](http://www.oqaatsit.gl).

### Currency

The Krone (DKK) is the currency of the Kingdom of Denmark, and thereby also the currency used in Greenland.

As a citizen in Kommuneqarfik Sermersooq you can open accounts, set up cash cards etc. in Grønlandsbanken or Sparbank.

### Health Service

All public medical and dental care, prescription drugs included, are free of charge in Kommuneqarfik Sermersooq. Please notice that there can be difficulties getting specialized dental treatment. However private dental clinics can be found in Nuuk.



General Practitioners do not exist in Greenland, thus doctors do not visit private homes. Instead you may consult the local medical clinic.

The health services are capable of treating most emergencies but in case of serious illness it is possible to be transferred to Denmark for treatment. Your housing certificate will work as a medical card when you're abroad.

### Institutional and Educational Offerings

In Kommuneqarfik Sermersooq there are a variety of institutional and educational offerings. Listed below is a brief review of the possibilities.

#### Daycare centers

Both kindergartens and nurseries are offered, however you may wait up to two years for a place. You can sign your child up for a place during pregnancy - about 8 months before the birth.

The payment for daycare varies according to income.

Further information concerning current charges is available at your Citizen Service Centre. Here you can also fill out the application for registration etc.

As a rule, caretaking is open on all weekdays from 7am to 5pm.

### School & after-school caretaking

All children in the compulsory educative age and living in Kommuneqarfik Sermersooq have a right to attend one of the municipality's public schools.

Unlike the above-mentioned there are no waiting lists concerning school and after-school caretaking. Schools in all the towns and settlements manage the ten years of compulsory education. The compulsory education begins in August when the child turns six years.

The school is divided into three steps; a 3-year step for the youngest age group; a 4-year step for the middle age group; and a 3-year step for the oldest age group. The teaching languages are Danish and Greenlandic.

Find complete lists containing after-school centers and schools in Kommuneqarfik Sermersooq at [www.sermersooq.gl](http://www.sermersooq.gl).

### Institutions of higher education

In Kommuneqarfik Sermersooq you have the opportunity for taking a short, medium, or long higher education. Among other things there are high-schools, a business school, an art school, a centre of health education, a maritime college and a teachers' seminar.

In addition the University of Greenland, Ilisimatusarfik, is placed in Nuuk. Here is offered a great scale of higher educations within the following fields of science; administration, journalism, history, political science, religion, cultural and society history, literature, language and media studies etc.

### Housing Conditions

It can be difficult to find a place to live in Nuuk. However, building projects are in progress to reduce the problem.

Often your employer can help you getting an apartment. It is unusual to get a furnished permanent apartment, and the Greenlandic apartments are not installed with white goods.



It is possible to apply for rent subsidy. The application form is available at [www.boligsikring.gl](http://www.boligsikring.gl). Citizen Services offer guidance concerning rent subsidy. Here you can also get a housing certificate for 50 DKK after staying in Greenland for more than 185 days.

The housing certificate among other things works as a medical card when you're abroad.

### Electricity

Greenland possesses huge renewable energy resources in the form of hydro power. Among other cities in Greenland, Nuuk is 100 percent self-sufficient with electricity for both electric utility supply and heating. Nuuk is supplied with electricity from the hydro power plant, Buksefjord.



### Police

The primary function of the police is to maintain order and safety. In addition the police carry out many other tasks in Kommuneqarfik Sermersooq. For instance they issue citizens with passports; they are responsible for administration of lost property; they deal with applications for permission to work and stay; and they deal with permissions to carry weapons. In relation to the latter you must be aware that it is forbidden to carry, own or import weapons without permission from the chief constable in Greenland.

Also the police can issue you with a Greenlandic driving license in return for a small amount.

The Greenlandic driving license works as a supplement to your foreign driving license.

### Tax

The tax rate in Kommuneqarfik Sermersooq is 42 percent, and the personal allowance amounts to DDK 58.000 annually.

You must reside permanent in Greenland in order to be taxed. A permanent residence means that you have an official address (= registered in the national register) for at least six months. For that reason you should apply at the municipal tax office as soon as possible after arriving to Kommuneqarfik Sermersooq. Here they can help you get registered in the national register.

### Transport

In Kommuneqarfik Sermersooq there are no trains, and the towns and settlements are not connected by a road system. Thus you must travel by air or sea if you wish to travel from one town or settlement to another.

There exist rich opportunities for traveling by bus or taxi in Nuuk. The busses run from early morning to late evening, and the fare is DDK 15.

Additionally a lot of people choose to have cars or bicycles. As mentioned above you must have a Greenlandic driving license as a supplement to your foreign driving license.

Notice that it is forbidden to ride a motor cycle in Kommuneqarfik Sermersooq.

### Emergencies

Greenland does not have a joint control centre concerning emergencies. Instead you must contact the concerned department directly:

#### Fire

Dial 321056(Nuuk) or 495377(Paamiut), or use the yellow fire alarms, which are placed at lamp posts.

#### Accident

Call the ambulance at 344112(Nuuk), 681211(Paamiut) or 981211(Tasiilaq).

#### Illness

Consult the medical clinic, SANA in Nuuk.  
Phone number: 34 44 00 or 34 44 01.

#### Police

Dial 321448(Nuuk), 681222(Paamiut) or 981448(Tasiilaq).

#### Crisis Centre

Dial 363125 or 554647.

#### Citizens in crisis: 24-hour service

Day and night service addressed persons in crisis, suicidal persons, and relatives.  
Dial 555738.

